

A modern lounge area with a green carpet, wooden walls, and contemporary furniture. The room features a long, low wooden bench with cushions, several armchairs, and two round coffee tables with metal frames. The walls are clad in light-colored wood, and the ceiling has recessed lighting. A window on the left shows an outdoor view. The overall aesthetic is clean, bright, and professional.

**POLYFLOR™**  
COVERING THE WORLD

COMMERCIAL  
& RESIDENTIAL  
**FLOORING**  
COLLECTIONS





## Sustainable Performance

Across all areas of the business, sustainability is high on the agenda and our strategy is to minimise the environmental impact of our operations and products.

At Polyflor we are clear in the belief that our customers shouldn't have to compromise on performance, choice or budget in order to use products with the lowest impact as positive environmental credentials and benefits are built in to our flooring.

Through numerous environmental assessments, Polyflor products continue to demonstrate that they are environmentally sound, have minimal impact on the environment and will contribute positively on project assessments including BREEAM®, LEED® and Green Star®.

The unique composition of vinyl creates an extremely practical and durable flooring where high quality and high performance come together. Other elements, whether underfoot safety, hygiene, ease of maintenance, durability or aesthetics work hand in glove with the environmental performance of the product, creating a portfolio of multi-functional sustainable floor coverings to suit budgets for both new build and refurbishment schemes.

For more information, take a look at our latest Sustainability Report at [www.polyflor.com/sustainability](http://www.polyflor.com/sustainability)

## Welcome to Polyflor

Polyflor is the only UK-based manufacturer of a full range of high quality, high performance resilient floor coverings. Part of James Halstead Plc, with UK headquarters based in Manchester, the James Halstead Group employs over 830 people, has two UK production facilities, extensive warehousing capacity and sales distribution sites based throughout the world supplying commercial and residential vinyl floor coverings.



## Here to Help

We can provide advice on the suitability, performance and application of any Polyflor product and support you throughout your project. We work closely with our global distribution partners to ensure that support is mirrored throughout the supply chain.

Contact the Polyflor Customer Technical Services Department (CTSD) either directly in the UK, through your local distributor or via our website [www.polyflor.com/contact](http://www.polyflor.com/contact)







**Education**



**Workplace**



**Health & Care**



**Retail**



**Housing**



**Leisure & Hospitality**



**Industry**

## Market Sectors

Whether it's helping the healing or the learning process, designing an inspiring shopping or visitor experience, creating a productive work environment or refurbishing areas of your own home, here at Polyflor we have a vast selection of multi-functional products to suit the specification, scale and budget of your project across a wide variety of sectors.

Floor coverings, when part of the complete design concept, can have a significant impact on the 'look and feel' of a space, enabling the creation of truly bespoke interiors. With significant warehousing capacity and product availability, fast lead times are guaranteed for customers through our extensive network of distribution partners based throughout the UK and around the world.

Whatever your project,  
we've got it covered.



## Circulation & Corridors



## Bathroom & Shower Areas



## Consulting Rooms



## Receptions

## Wards



## Theatre Suites



# Health & Care

The creation of a safe, clean and comforting environment for patients and staff is paramount within complex and busy health and care establishments.

Floor covering specification will depend upon the function of the area and traffic levels, as well as the need to adhere to strict performance, quality and hygiene requirements.

Hardwearing floor coverings that are easy to clean, offer enhanced slip resistance and acoustic benefits can help create specialist medical areas that are high performance and aesthetically appealing. Design and colour have many functions within a health and care environment, including zoning, wayfinding and can contribute positively to support those being cared for and the staff themselves.

New product development is at the heart of our health and care flooring solutions. Recent innovations include the availability of plainer decoration products for those living with dementia, a stud-free safety flooring range for continually wet areas, and for areas where a quick turnaround is required, a loose lay safety flooring designed for adhesive free installation.





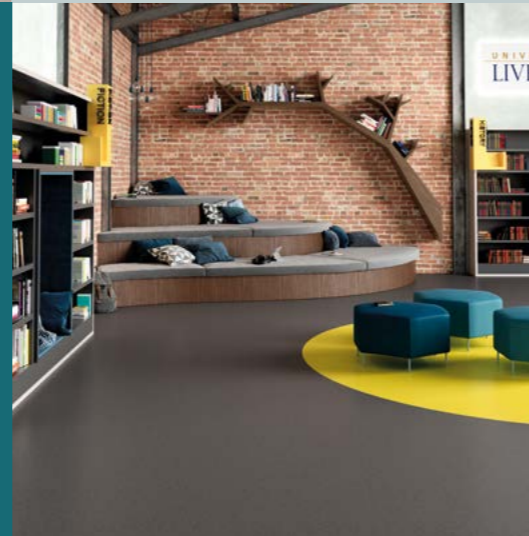
## Entrances & Receptions



## Classrooms



## Circulation Areas & Corridors



## Food Service Areas



## Changing Rooms



## Libraries



# Education

In busy education establishments the creation of a safe and stimulating environment which is conducive to learning is essential for pupils and staff alike.

The performance requirement of flooring in education environments can depend upon the function of the space, the age of the pupils, expected activity levels and the intensity of footfall.

Easy to clean, tough and durable floor coverings are often required to cope with the demands of complex learning environments. Polyflor's diverse range of hard wearing, high-design product ranges can be used to create education environments that are both practical and visually appealing, bringing an energy and vibrancy through the use of colour, texture and patterns.





Entrance  
& Walkways



Merchandise  
Areas



Bespoke Design



Displays



Office  
& Stores



Changing Rooms

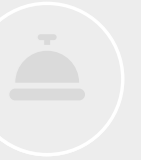


## Retail

Within retail establishments, flooring is one of the hardest working elements of an interior design scheme when it comes to creating an inspirational and memorable space.

Heavy, repeated footfall is a characteristic of retail premises and floor coverings are required to be hardwearing, without compromising on aesthetics or design.

On trend flooring collections that authentically replicate the look of natural materials are developed with the retail sector in mind. Stock availability of these attractive floor coverings in a variety of designs, colours, surface textures, can often be key to ensure that long term roll out programmes can be fulfilled. To avoid disruption and down-time flexible flooring solutions are required and these include loose lay, adhesive-free product ranges for quick turnaround projects. Floor designs can be made even more bespoke with the creative use of inlay accessories.





## Entrances & Receptions



## Wet Areas



## Circulation & Stairwells



## Galleries



## Gyms



## Restaurants



# Leisure & Hospitality

The flooring requirements of the diverse leisure and hospitality sector depend upon the functionality of the space.

High levels of traffic require a robust, durable flooring, with conformance to internationally recognised standards for fire, slip resistance and acoustics.

The extensive Polyflor portfolio enables the selection of fit-for-purpose products as per the use area specification. A variety of looks can be achieved in order to create unique spaces or a consistent style dependent upon the overall interior design scheme by using a selection of available formats - sheet, tiles and planks in various colours, textures and finishes.

Products that are quick and easy to install, creating minimal disruption are preferable. Vinyl sheet can be welded to create a seamless space, impermeable to water, which combined with a bespoke cleaning regime provides a low maintenance, hygienic flooring solution in leisure and hospitality environments.





Entrance  
Foyers



Open Plan  
Offices



Breakout  
Rooms



Meeting  
Rooms



Communal  
Kitchens



Toilet &  
Bathrooms



## Workplace

The choice of floor coverings within a workplace can create a sense of identity for employees as well as providing a safe and secure working environment.

Flooring within a workplace must adhere to health & safety regulations and be durable enough to accommodate varying levels of footfall throughout the day.

Key environmental considerations within the workplace include noise control, underfoot comfort and indoor air quality. Polyflor flooring ranges are classified as low VOC and the availability of floor coverings with an acoustic foam layer can contribute significantly to reducing impact sound and improving underfoot comfort.

When considering design requirements, Light Reflectance Values (LRV) are available and can be used to ensure compliance to building regulations across multi-purpose spaces.





Living Rooms



Bathrooms



Kitchens



Bedrooms

Communal Areas



Entrance & Hallways



# Housing

When it comes to choosing flooring for a residential setting, the impact of selecting the correct material should not be underestimated. Polyflor luxury vinyl flooring collections authentically replicate the natural beauty of wood and stone with enhanced durability and easier maintenance.

Flooring within any kind of housing is an opportunity to inject a sense of individuality and style into home interiors. From traditional to contemporary colours, textures and patterns, available in plank, tile or sheet format, the choice is extensive. Combining design and function, recent developments include interlocking planks and tiles for minimum disruption, with built in acoustic properties.





Work Stations



Laboratories



Walkways  
& Circulation



Clean Rooms



Toilets & Showers



Servery  
& Kitchens



# Industry

Polyflor offers an extensive selection of fit-for-purpose products classified as suitable for very heavy commercial environments and intense use areas in a variety of industrial locations.

For areas designed to meet specific static control requirements the Polyflor ESD family of floor coverings feature electrostatic dissipative or conductive properties.

Within specialist environments high standards of cleanliness are often essential and products incorporating a polyurethane reinforcement, providing low maintenance benefits and resisting soiling and scuffing are available.





# HOMOGENEOUS

Attractive, high performance flexible vinyl sheet and tile flooring with a mono-layer construction. Available in non-directional or marbleised decoration, in a broad palette of colours. A low maintenance, hygienic flooring solution, ideal for the demanding health & care sector and education interiors.

Palettone PUR	30
Pearlazzo & Prestige PUR	34
Classic Mystique PUR	36
2000 PUR	38
XL PU	40
Standard XL	42



TECHNICAL DATA	STANDARDS	Palettone PUR	Pearlazzo & Prestige PUR	Classic Mystique PUR	2000 PUR	XL PU	Standard XL
----------------	-----------	---------------	--------------------------	----------------------	----------	-------	-------------

Product Format

Gauge	ISO 24346 (EN 428)	2.0mm	2.0mm	2.0mm	2.0mm, 2.5mm	1.5mm, 2.0mm	1.5mm, 2.0mm
Sheet Size	ISO 24341 (EN 426)	2m x 20m	2m x 20m	2m x 20m	2.0mm: 2m x 20m 2.5mm: 2m x 15m	1.5mm: 2m x 27.5m 2.0mm: 2m x 20m	1.5mm: 2m x 27.5m 2.0mm: 2m x 20m
Tile Size	ISO 24342 (EN 427)	608mm x 608mm	-	300mm x 300mm 608mm x 608mm	2.0mm: 300mm x 300mm 2.0mm: 608mm x 608mm 2.5mm: 300mm x 300mm	2.0mm: 300mm x 300mm 2.0mm: 608mm x 608mm	2.0mm: 300mm x 300mm 2.0mm: 608mm x 608mm
Total Weight	ISO 23997 (EN 430)	2800g/m <sup>2</sup>	2950g/m <sup>2</sup>	3250g/m <sup>2</sup>	2.0mm: 3550g/m <sup>2</sup> 2.5mm: 4552g/m <sup>2</sup>	1.5mm: 2360g/m <sup>2</sup> 2.0mm: 3200g/m <sup>2</sup>	1.5mm: 2360g/m <sup>2</sup> 2.0mm: 3200g/m <sup>2</sup>
Finish		PUR	PUR	PUR	PUR	PU	-

Performance Requirements

General Performance	ISO 10581	Conforms	Conforms	Conforms	Conforms	Conforms	Conforms
	ASTM F1913	Conforms	Class I, Type A	Conforms	Conforms	Conforms	Conforms
	ASTM F1700	Class I, Type A	-	Class I, Type A	Class I, Type A	Class I, Type A	Class I, Type A
Use Area	ISO 10874 (EN 685)	23, 34, 43	23, 34, 43	23, 34, 43	2.0mm, 2.5mm: 23, 34, 43	1.5mm: 23, 32, 41 2.0mm: 23, 34, 43	1.5mm: 23, 32, 41 2.0mm: 23, 34, 43
Slip Resistance	EN 13893	Class DS	Class DS	Class DS	Class DS	Class DS	Class DS
	DIN 51130 / DIN EN 16165 Ann. B	R10	R9	R9	R9	R9	R9
Binder Content	ISO 10581	Type I	Type I	Type I	Type II	Type II	Type II
Abrasion Resistance	EN 660-2	Group T	Group T	-	Group M	Group M	Group M
Reaction to Fire	EN 13501-1	Class Bfl-S1	Class Bfl-S1	Class Bfl-S1	Class Bfl-S1	Class Bfl-S1	Class Bfl-S1
	ASTM E662	<450	<450	<450	<450 (2.0mm)	<450	<450
	ASTM E648	Class 1	Class 1	Class 1	Class 1 (2.0mm)	Class 1	Class 1
	CAN/ULC S102.2	FSV < 300; SDV < 500	FSV < 300; SDV < 500	FSV < 300; SDV < 500	FSV < 300; SDV < 500 (2.0mm)	FSV < 300; SDV < 500 (2.0mm)	FSV < 300; SDV < 500 (2.0mm)
Static Electrical Propensity	EN 1815	≤2.0kV Classified as 'antistatic'	≤2.0kV Classified as 'antistatic'	≤2.0kV Classified as 'antistatic'	≤2.0kV Classified as 'antistatic'	≤2.0kV Classified as 'antistatic'	≤2.0kV Classified as 'antistatic'
Residual Indentation	ASTM F970 (Modified)	≤0.005" (750 psi)	≤0.005" (750 psi)	≤0.005" (750 psi)	≤0.005" (750 psi)	≤0.005" (750 psi) (2.0mm)	≤0.005" (750 psi)
Castor Chair (continuous use)	ISO 4918 (EN 425)	Suitable	Suitable	Suitable	Suitable	Suitable	Suitable

Sustainability

BRE Green Guide		A+ ENP 472	A+ ENP 472	A+ ENP 472	A+ ENP 472	A+ ENP 472	A+ ENP 472
Indoor Air Comfort Gold		Eurofins certified product	Eurofins certified product	Eurofins certified product	Eurofins certified product	Eurofins certified product	Eurofins certified product
FloorScore		Certified	Certified	Certified	Certified	Certified	Certified
Finnish M1 Classification		Certified	Certified	Certified	Certified (2.0mm)	Certified	Certified
AgBB/ABG		Pass	Pass	Pass	Pass	Pass	Pass
Responsible Sourcing	BES 6001	Excellent	Excellent	Excellent	Excellent	Excellent	Excellent

Acoustic Performance

Impact Sound Reduction	ISO 10140-3	4dB	4dB	4dB	4dB (2.0mm)	4dB (2.0mm)	4dB (2.0mm)
------------------------	-------------	-----	-----	-----	-------------	-------------	-------------

Maintenance Performance

Resistance to Chemicals	ISO 26987 (EN 423)	Good resistance	Good resistance	Good resistance	Good resistance	Good resistance	Good resistance
-------------------------	--------------------	-----------------	-----------------	-----------------	-----------------	-----------------	-----------------

All Polyflor commercial sheet vinyl ranges provide a continuous, impervious and hygienic flooring solution which can be confidently cleaned in accordance with recommended maintenance procedures and approved maintenance products. The implementation of an effective cleaning regime is the most important defence against infection.





# Palettone PUR



## Palettone PUR

### Technical Specification

#### Product Format

Gauge	ISO 24346 (EN 428)	2.0mm
Total Weight	ISO 23997 (EN 430)	2800g/m <sup>2</sup>
Finish	PUR	

#### Performance Requirements

General Performance	ISO 10581	Conforms
	ASTM F1913 ASTM F1700	Conforms Class I, Type A
Use Area	ISO 10874 (EN 685)	23, 34, 43
	EN 13893 DIN 51130 /	Class DS R10
Slip Resistance	DIN EN 16165 Ann. B AS 4586 ASTM D2047	R10 SCOF ≥0.6
	Binder Content	ISO 10581 Type I
	Abrasion Resistance	EN 660-2 Group T
Reaction to Fire	EN 13501-1	Class Bfl-S1
	ASTM E648	Class 1
	ASTM E662 CAN/ULC S102.2	<450 FSV < 300; SDV < 500
	AS ISO 9239-1	>8.0 kW/m <sup>2</sup>
Static Electrical Propensity	EN 1815	≤2.0kV Classified as 'antistatic'
Residual Indentation	ASTM F970 (Modified) ISO 24343-1	≤0.005" (750psi) ≤0.10mm
Castor Chair (continuous use)	ISO 4918 (EN 425)	Suitable
Flexibility	ASTM F137	Pass
Underfloor Heating	Suitable, max 27°C	
Light Fastness	ISO 105-B02 (Method 3)	≥6
Resistance to Light	ASTM F1515	ΔE ≤ 8.0 - Meets
Resistance to Heat	ASTM F1514	ΔE ≤ 8.0 - Meets

#### Sustainability

BRE Green Guide	A+ ENP 472	
GreenTag	LCA Rate Gold Plus	GreenRate level A
Generic EN 15804 EPD	Available	
Recyclable	100%	
Recycled Content	25%	
REACH	Compliant	
Indoor Air Comfort Gold	Eurofins certified product	
FloorScore	Certified	
Finnish M1 Classification	Certified	
AqBB/ABG	Pass	
VOC Emissions	TVOC after 28 days	≤ 10µg/m <sup>3</sup>
Responsible Sourcing	BES 6001	Excellent

#### Acoustic Performance

Impact Sound Reduction	ISO 10140-3	4dB
------------------------	-------------	-----

#### Maintenance Performance

Resistance to Chemicals	ISO 26987 (EN 423)	Good resistance
	ASTM F925	Good resistance
Alco Hand Gels	Compatible for use with most commonly used alco-based hand gels	
Steam Cleaning	Suitable for steam cleaning on a periodic basis	

All Polyflor commercial sheet vinyl ranges provide a continuous, impervious and hygienic flooring solution which can be confidently cleaned in accordance with recommended maintenance procedures and approved maintenance products. The implementation of an effective cleaning regime is the most important defence against infection. Regular light maintenance is more cost-effective than periodic heavy maintenance and more beneficial to the floor covering.

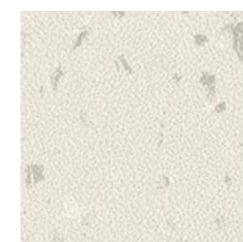
#### Hygiene

Bacterial Resistance	ISO 846 Part C	Does not favour growth
Clean Rooms	ISO 14644-1	Class 4
Decontamination	ISO 8690	Excellent

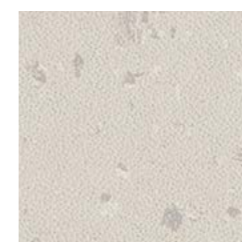
### Sheet & Tile Sizes

Format	Size	Shades	Coverage per Roll
Sheet	2m x 20m	42	40m <sup>2</sup>

Format	Size	Shades	Quantity per Box	Coverage per Box
Tile	608mm x 608mm +	12	14	5.17m <sup>2</sup>



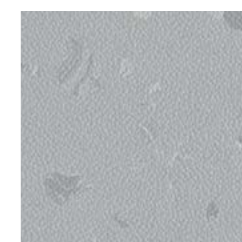
Urban Air **8605**  
NCS S 1002-Y  
w/r 8605 LRV 68



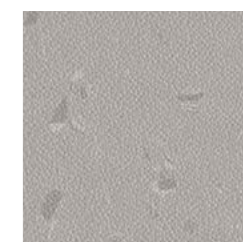
Linen Air **8635**  
NCS S 1502-Y  
w/r 9703 LRV 62



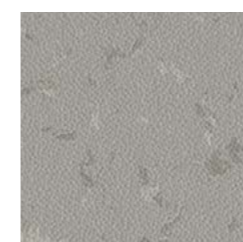
Frosted Glass **8606**  
NCS S 2002-G50Y  
w/r 8606 LRV 53



Cool Blende **8636**  
NCS S 3005-R80B  
w/r 9704 LRV 43



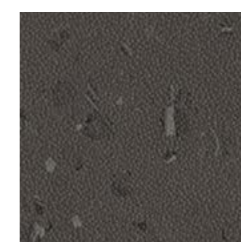
Dove Tail **8607**  
NCS S 3502-R  
w/r 8607 LRV 38



Lunar Landscape **8637**  
NCS S 4000-N  
w/r 9718 LRV 34



Pencil Lead **8608**  
NCS S 6005-B20G  
w/r 8608 LRV 18



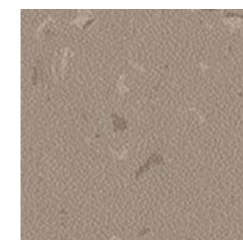
Deep Space **8609**  
NCS S 7500-N  
w/r 8609 LRV 10



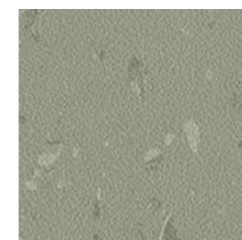
Natural Cotton **8621**  
NCS S 1505-Y50R  
w/r 8621 LRV 58



Earthenware **8641**  
NCS S 2005-Y50R  
w/r 9716 LRV 49



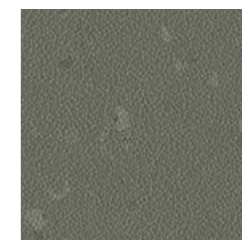
Fired Ochre **8642**  
NCS S 4005-Y20R  
w/r 9724 LRV 29



Garden Sage **8643**  
NCS S 4005-G50Y  
w/r 8643 LRV 32



Quarrystone **8639**  
NCS S 5500-N  
w/r 8639 LRV 23



Dried Tarragon **8644**  
NCS S 6005-G50Y  
w/r 8644 LRV 17



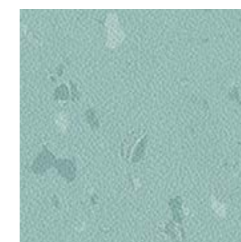
Freshly Ground **8624**  
NCS S 7005-Y20R  
w/r 8624 LRV 12



Woodland Air **8615**  
NCS S 1005-G20Y  
w/r 8615 LRV 70



Orchard Walk **8616**  
NCS S 1020-G40Y  
w/r 8616 LRV 60



Pennyroyal Mint **8652**  
NCS S 2020-B50G  
w/r 9706 LRV 45



Crisp Apple **8653**  
NCS S 2030-G30Y  
w/r 9708 LRV 40



Sunshine Meadow **8617**  
NCS S 2050-G60Y  
w/r 8617 LRV 38



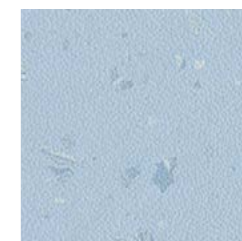
English Garden **8618**  
NCS S 3050-G40Y  
w/r 8618 LRV 17



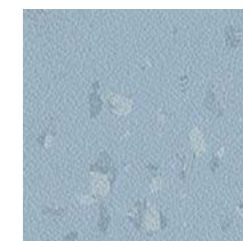
Morning Air **8610**  
NCS S 1002-B50G  
w/r 8610 LRV 75



Weekend Sky **8611**  
NCS S 0907-R90B  
w/r 8611 LRV 64

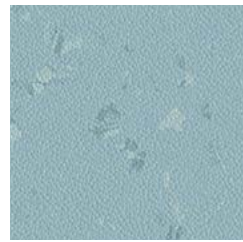


Painter's Dream **8612**  
NCS S 1020-R80B  
w/r 8612 LRV 54

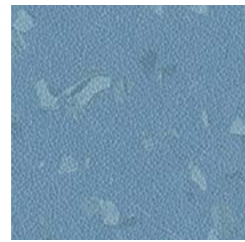


Superior Sky **8648**  
NCS S 2020-R90B  
w/r 9709 LRV 43

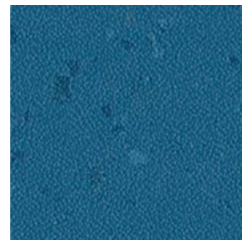




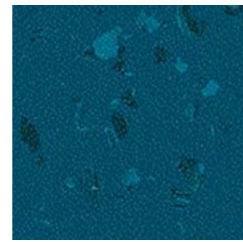
Aqua Pura **8651** w/r 9710  
NCS S 3010-B LRV 41



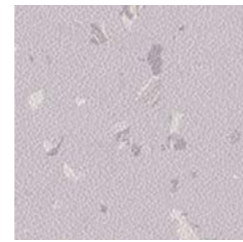
Faded Denim **8613** w/r 8613  
NCS S 3030-R90B LRV 28



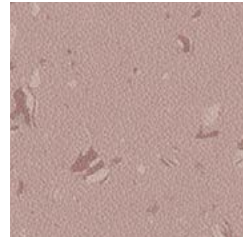
Sapphire Star **8649** w/r 9720  
NCS S 5030-R90B LRV 14



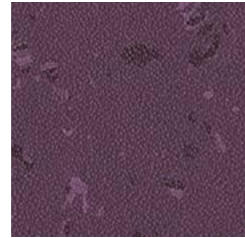
Petrol **8614** w/r 8614  
NCS S 6030-B10G LRV 9



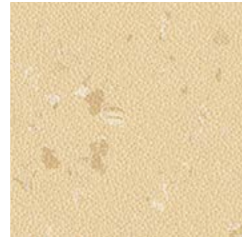
Lily Petal **8626** w/r 8626  
NCS S 2005-R40B LRV 53



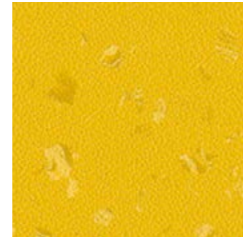
Potters Wheel **8628** w/r 8628  
NCS S 3010-R LRV 35



Regency Room **8629** w/r 8629  
NCS S 6020-R40B LRV 10



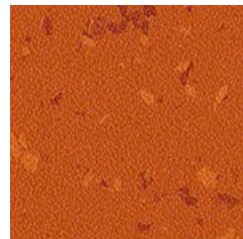
Hay Grain **8655** w/r 9702  
NCS S 1515-Y10R LRV 59



New Dawn **8630** w/r 8630  
NCS S 1070-Y10R LRV 49



Buttered Corn **8656** w/r 3580  
NCS S 2040-Y10R LRV 48



Cayenne Heat **8633** w/r 8633  
NCS S 3060-Y60R LRV 18



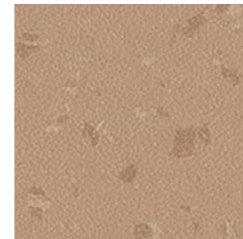
Heritage Hall **8634** w/r 8634  
NCS S 5040-Y90R LRV 10



Harvest Air **8620** w/r 8620  
NCS S 1005-Y30R LRV 69



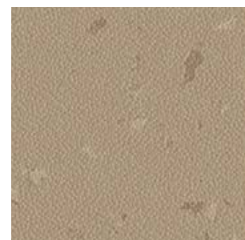
Foundation **8622** w/r 8622  
NCS S 2010-Y20R LRV 49



Wild Portabella **8647** w/r 9713  
NCS S 3010-Y40R LRV 33



Pecan Crunch **8646** w/r 9723  
NCS S 3010-Y20R LRV 39



China Clay **8623** w/r 8623  
NCS S 4010-Y30R LRV 31

w/r - Weld Rod LRV - Light Reflectance Value NCS - Natural Colour System + Tile: 2.0mm - 608mm x 608mm







# Pearlazzo & Prestige PUR



## Pearlazzo PUR



**Toasted Almond 9716** w/r 9716  
NCS S 2005-Y30R LRV 51



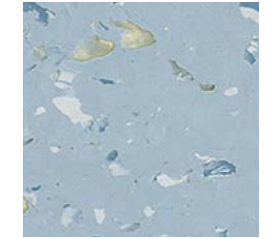
**Chalk Burst 9703** w/r 9703  
NCS S 1502-Y LRV 64



**Sailcloth 9719** w/r 9719  
NCS S 2002-Y50R LRV 51



**Mint Crisp 9706** w/r 9706  
NCS S 2020-B50G LRV 45



**Skylight 9709** w/r 9709  
NCS S 2010-R90B LRV 43



**Rain Cloud 9718** w/r 9718  
NCS S 3502-G LRV 34

## Technical Specification

### Product Format

Gauge	ISO 24346 (EN 428)	2.0mm
Total Weight	ISO 23997 (EN 430)	2950g/m <sup>2</sup>
Finish		PUR

### Performance Requirements

General Performance	ISO 10581 ASTM F1913	Conforms Class I, Type A
Use Area	ISO 10874 (EN 685)	23, 34, 43
Slip Resistance	EN 13893	Class DS
	DIN 51130 /	R9
	DIN EN 16165 Ann. B	R9
	AS 4586 ASTM D2047	SCOF ≥0.6
Binder Content	ISO 10581	Type I
Abrasion Resistance	EN 660-2	Group T
	EN 13501-1	Class Bfl-S1
	ASTM E648	Class 1
	ASTM E662	<450
Reaction to Fire	CAN/ULC S102.2	FSV < 300; SDV < 500
	AS ISO 9239-1	>8.0 kW/m <sup>2</sup>
	Static Electrical Propensity	EN 1815
Residual Indentation	ASTM F970 (Modified)	≤0.005" (750 psi)
	ISO 24343-1	≤0.10mm
Castor Chair (continuous use)	ISO 4918 (EN 425)	Suitable
Flexibility	ASTM F137	Pass
Underfloor Heating		Suitable, max 27°C
Light Fastness	ISO 105-B02 (Method 3)	≥6
Resistance to Light	ASTM F1515	ΔE ≤ 8.0 - Meets
Resistance to Heat	ASTM F1514	ΔE ≤ 8.0 - Meets

### Sustainability

BRE Green Guide	A+ ENP 472
Generic EN 15804 EPD	Available
Recyclable	100%
Recycled Content	25%
REACH	Compliant
Indoor Air Comfort Gold	Eurofins certified product
FloorScore	Certified
Finnish M1 Classification	Certified
AqBB/ABG	Pass
VOC Emissions	TVOC after 28 days ≤ 10µg/m <sup>3</sup>
Responsible Sourcing	BES 6001 Excellent

### Acoustic Performance

Impact Sound Reduction	ISO 10140-3	4dB
------------------------	-------------	-----

### Maintenance Performance

Resistance to Chemicals	ISO 26987 (EN 423)	Good resistance
	ASTM F925	Good resistance
Alco Hand Gels	Compatible for use with most commonly used alco-based hand gels	
Steam Cleaning	Suitable for steam cleaning on a periodic basis	

All Polyflor commercial sheet vinyl ranges provide a continuous, impervious and hygienic flooring solution which can be confidently cleaned in accordance with recommended maintenance procedures and approved maintenance products. The implementation of an effective cleaning regime is the most important defence against infection. Regular light maintenance is more cost-effective than periodic heavy maintenance and more beneficial to the floor covering.

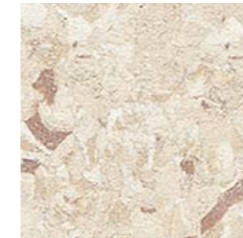
### Hygiene

Bacterial Resistance	ISO 846 Part C	Does not favour growth
Ease of Radioactive Decontamination	ISO 8690	Excellent

## Sheet Sizes

Format	Size	Shades	Coverage per Roll
Sheet	2m x 20m	14	40m <sup>2</sup>

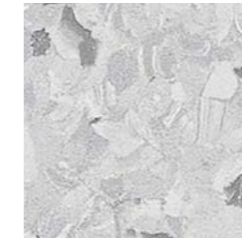
## Prestige PUR



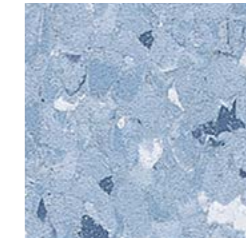
**Nutmeg 1910** w/r 1910  
NCS S 1510-Y50R LRV 59



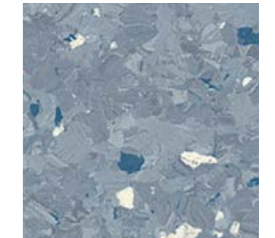
**Alabaster 1600** w/r 0630  
NCS S 2005-Y10R LRV 59



**Ice Crystal 1950** w/r 1950  
NCS S 2002-R50B LRV 57



**Pale Iris 1800** w/r 1800  
NCS S 2020-R90B LRV 39



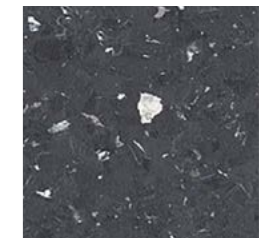
**Stone Blue 1840** w/r 1840  
NCS S 4010-R90B LRV 30



**Grey Marl 1930** w/r 1930  
NCS S 3502-R LRV 41



**Clove 1830** w/r 1830  
NCS S 4502-B LRV 32



**Liquorice 1940** w/r 1940  
NCS S 6500-N LRV 9





# Classic Mystique PUR



## Technical Specification

### Product Format

Gauge	ISO 24346 (EN 428)	2.0mm
Total Weight	ISO 23997 (EN 430)	3250g/m <sup>2</sup>
Finish	PUR	

### Performance Requirements

General Performance	ISO 10581	Conforms
	ASTM F1913	Conforms
	ASTM F1700	Class I, Type A
Use Area	ISO 10874 (EN 685)	23, 34, 43
	EN 13893	Class DS
Slip Resistance	DIN 51130 /	R9
	DIN EN 16165 Ann. B	R9
	AS 4586	SCOF ≥0.6
Binder Content	ISO 10581	Type I
	EN 13501-1	Class Bfl-S1
Reaction to Fire	ASTM E648	Class 1
	ASTM E662	<450
	CAN/ULC S102.2	FSV < 300; SDV < 500
	BCA Spec C1.10 Clause 3	Complies
Static Electrical Propensity	EN 1815	≤2.0kV Classified as 'antistatic'
	ASTM F970 (Modified)	≤0.005" (750 psi)
Residual Indentation	ISO 24343-1	≤0.10mm
Castor Chair (continuous use)	ISO 4918 (EN 425)	Suitable
Flexibility	ASTM F137	Pass
Underfloor Heating	Suitable, max 27°C	
Light Fastness	ISO 105-B02 (Method 3)	≥6
Resistance to Light	ASTM F1515	ΔE ≤ 8.0 - Meets
Resistance to Heat	ASTM F1514	ΔE ≤ 8.0 - Meets

### Sustainability

BRE Green Guide	A+ ENP 472	
GreenTag	LCA Rate Gold Plus	GreenRate level A
Generic EN 15804 EPD	Available	
Recyclable	100%	
Recycled Content	25%	
REACH	Compliant	
Indoor Air Comfort Gold	Eurofins certified product	
FloorScore	Certified	
Finnish M1 Classification	Certified	
AqBB/ABG	Pass	
VOC Emissions	TVOC after 28 days	≤ 10µg/m <sup>3</sup>
Responsible Sourcing	BES 6001	Excellent

### Acoustic Performance

Impact Sound Reduction	ISO 10140-3	4dB
------------------------	-------------	-----

### Maintenance Performance

Resistance to Chemicals	ISO 26987 (EN 423)	Good resistance
	ASTM F925	Good resistance
Alco Hand Gels	Compatible for use with most commonly used alco-based hand gels	
Steam Cleaning	Suitable for steam cleaning on a periodic basis	

All Polyflor commercial sheet vinyl ranges provide a continuous, impervious and hygienic flooring solution which can be confidently cleaned in accordance with recommended maintenance procedures and approved maintenance products. The implementation of an effective cleaning regime is the most important defence against infection. Regular light maintenance is more cost-effective than periodic heavy maintenance and more beneficial to the floor covering.

### Hygiene

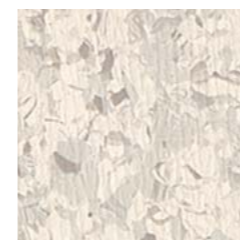
Bacterial Resistance	ISO 846 Part C	Does not favour growth
Ease of Radioactive Decontamination	ISO 8690	Excellent

## Sheet & Tile Sizes

Format	Size	Shades	Coverage per Roll
Sheet	2m x 20m	24	40m <sup>2</sup>

Format	Size	Shades	Quantity per Box	Coverage per Box
Tile	300mm x 300mm	24	50	4.5m <sup>2</sup>
	608mm x 608mm	24	14	5.17m <sup>2</sup>

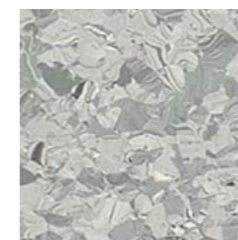
## Classic Mystique PUR



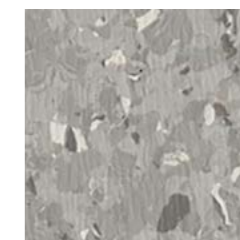
Silent Dove **1540**  
NCS S 1002-Y w/r 1540 LRV 66



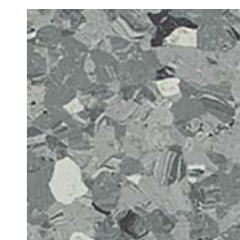
Quartz **1400**  
NCS S 2500-N w/r 9340 LRV 50



Pale Slate **1200**  
NCS S 3502-B w/r 1200 LRV 47



Steel Parade **1550**  
NCS S 3500-N w/r 1550 LRV 36



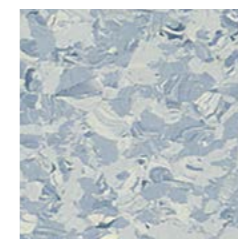
Smokestone **1160**  
NCS S 4502-G w/r 9120 LRV 28



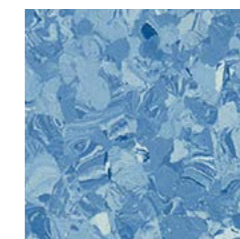
Nocturne **1380**  
NCS S 6502-B w/r 8270 LRV 13



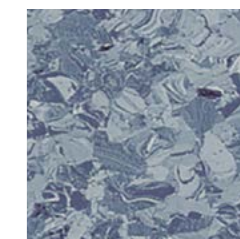
Atlantic Surf **1590**  
NCS S 1510-R80B w/r 1590 LRV 58



Ladoga **1410**  
NCS S 2010-R90B w/r 1410 LRV 46



Cloudburst **1210**  
NCS S 2040-R90B w/r 1210 LRV 32



Mountain Lake **1330**  
NCS S 3020-R90B w/r 8350 LRV 28



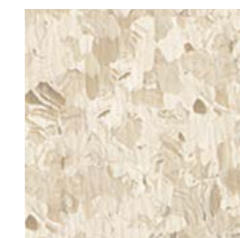
Delta Blue **1220**  
NCS S 6020-R80B w/r 1220 LRV 11



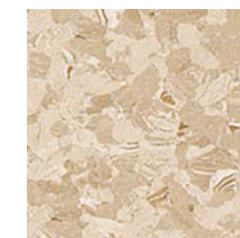
Lemon Zest **1140**  
NCS S 1060-Y10R w/r 1140 LRV 58



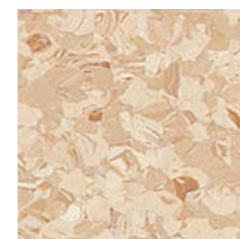
Silver Mist **1430**  
NCS S 1505-Y40R w/r 1430 LRV 62



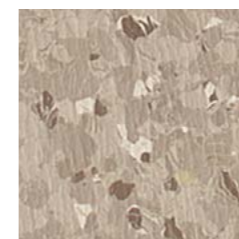
Soft Almond **1560**  
NCS S 1505-Y40R w/r 1560 LRV 64



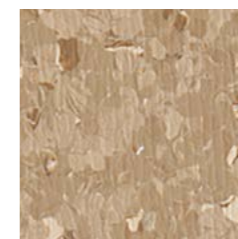
Satinwood **1370**  
NCS S 1505-Y30R w/r 8320 LRV 55



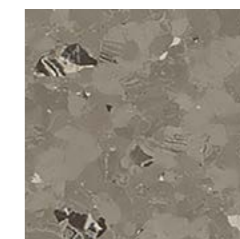
Shoreline **1460**  
NCS S 2020-Y30R w/r 1460 LRV 55



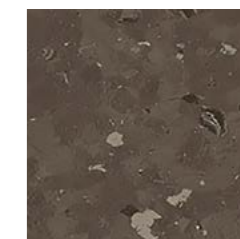
Nut Husk **1570**  
NCS S 3005-Y50R w/r 1570 LRV 38



Sorrel Bay **1580**  
NCS S 3010-Y30R w/r 1580 LRV 36



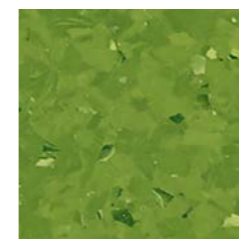
Cloud Stone **1530**  
NCS S 4502-Y w/r 1530 LRV 25



Smoked Truffle **1190**  
NCS S 7005-Y20R w/r 1190 LRV 12



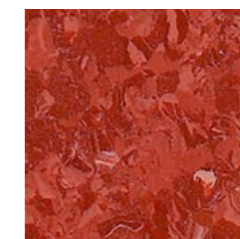
Asparagus **1320**  
NCS S 3010-G50Y w/r 8360 LRV 37



Spring Meadow **1150**  
NCS S 3050-G40Y w/r 1150 LRV 22



Rich Chocolate **1520**  
NCS S 7010-Y50R w/r 1520 LRV 10



Sunblaze **1260**  
NCS S 3060-Y90R w/r 1260 LRV 14

w/r - Weld Rod LRV - Light Reflectance Value NCS - Natural Colour System





## Technical Specification

### Product Format

Gauge	ISO 24346 (EN 428)	2.0mm, 2.5mm
Total Weight	ISO 23997 (EN 430)	2.0mm: 3550g/m <sup>2</sup>
		2.5mm: 4552g/m <sup>2</sup>
Finish		PUR

### Performance Requirements

General Performance	ISO 10581	Conforms
	ASTM F1913	Conforms
	ASTM F1700	Class I, Type A
Use Area	ISO 10874 (EN 685)	23, 34, 43
	EN 13893	Class DS
Slip Resistance	DIN 51130 /	R9
	DIN EN 16165 Ann. B	
	AS 4586	R9
	ASTM D2047	SCOF ≥0.6
Binder Content	ISO 10581	Type II
Abrasion Resistance	EN 660-2	Group M
	EN 13501-1	Class Bfl-S1
Reaction to Fire	ASTM E648	Class 1 (2.0mm)
	ASTM E662	<450 (2.0mm)
	CAN/ULC S102.2	FSV < 300; SDV < 500 (2.0mm)
	AS ISO 9239-1	>8.0 kW/m <sup>2</sup>
Static Electrical Propensity	EN 1815	≤2.0kV Classified as 'antistatic'
Residual Indentation	ASTM F970 (Modified) ISO 24343-1	≤0.005" (750 psi) ≤0.10mm
Castor Chair (continuous use)	ISO 4918 (EN 425)	Suitable
Flexibility	ASTM F137	Pass
Underfloor Heating		Suitable, max 27°C
Light Fastness	ISO 105-B02 (Method 3)	≥6
Resistance to Light	ASTM F1515	ΔE ≤ 8.0 - Meets
Resistance to Heat	ASTM F1514	ΔE ≤ 8.0 - Meets

### Sustainability

BRE Green Guide	A+ ENP 472
Generic EN 15804 EPD	Available
Recyclable	100%
Recycled Content	25%
REACH	Compliant
Indoor Air Comfort Gold	Eurofins certified product
FloorScore	Certified
Finnish M1 Classification	Certified (2.0mm)
AqBB/ABG	Pass
VOC Emissions	TVOC after 28 days ≤ 10µg/m <sup>3</sup>
Responsible Sourcing	BES 6001 Excellent

### Acoustic Performance

Impact Sound Reduction	ISO 10140-3	4dB (2.0mm)
------------------------	-------------	-------------

### Maintenance Performance

Resistance to Chemicals	ISO 26987 (EN 423)	Good resistance
	ASTM F925	Good resistance
Alco Hand Gels	Compatible for use with most commonly used alco-based hand gels	
Steam Cleaning	Suitable for steam cleaning on a periodic basis	

All Polyflor commercial sheet vinyl ranges provide a continuous, impervious and hygienic flooring solution which can be confidently cleaned in accordance with recommended maintenance procedures and approved maintenance products. The implementation of an effective cleaning regime is the most important defence against infection. Regular light maintenance is more cost-effective than periodic heavy maintenance and more beneficial to the floor covering.

### Hygiene

Bacterial Resistance	ISO 846 Part C	Does not favour growth
Ease of Radioactive Decontamination	ISO 8690	Excellent (2.0mm)

## Sheet & Tile Sizes

Format	Size	Shades	Coverage per Roll
Sheet	2.0mm: 2m x 20m	20	40m <sup>2</sup>
	2.5mm: 2m x 15m ◆	6	30m <sup>2</sup>

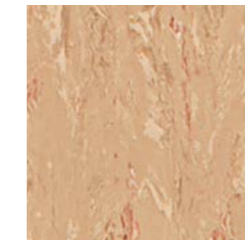
Format	Size	Shades	Quantity per Box	Coverage per Box
Tile	2.0mm: 300mm x 300mm	20	50	4.5m <sup>2</sup>
	2.0mm: 608mm x 608mm	20	14	5.17m <sup>2</sup>
	2.5mm: 300mm x 300mm ■	6	40	3.6m <sup>2</sup>



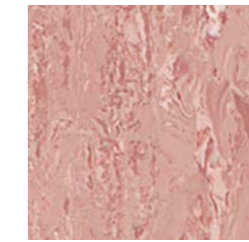
Oak **8300**  
NCS S 2010-Y30R  
w/r 8320 LRV 54  
◆ ■



Blossom **8900**  
NCS S 1515-Y30R  
w/r 8900 LRV 52



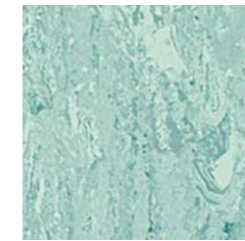
Buckwheat **8850**  
NCS S 3010-Y40R  
w/r 8850 LRV 39  
◆ ■



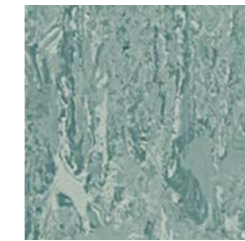
Rosehip **8950**  
NCS S 3020-Y80R  
w/r 8950 LRV 37



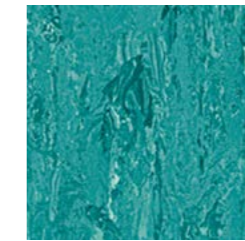
Dawn Mist **8800**  
NCS S 2005-Y30R  
w/r 8820 LRV 60



Mint Crest **8700**  
NCS S 2020-B60G  
w/r 8700 LRV 45



Willowbank **8380**  
NCS S 4010-B70G  
w/r 2120 LRV 29  
◆ ■



Glenbeck **8750**  
NCS S 4030-B50G  
w/r 8750 LRV 24



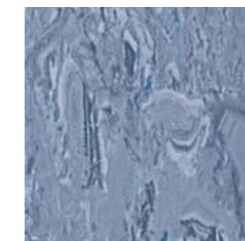
Lace Blue **8500**  
NCS S 2502-Y  
w/r 8500 LRV 47  
◆ ■



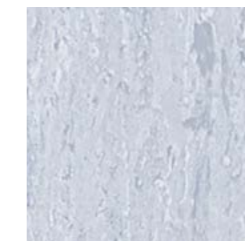
Stream **8050**  
NCS S 3010-R90B  
w/r 8200 LRV 35



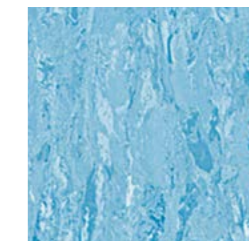
Stonewall **8230**  
NCS S 4502-B  
w/r 8230 LRV 29  
◆ ■



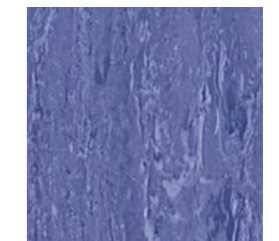
Larkspur **8350**  
NCS S 4020-R90B  
w/r 8350 LRV 27  
◆ ■



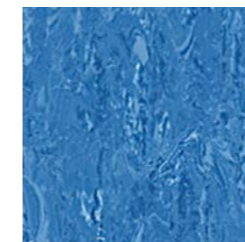
Wild Lilac **8650**  
NCS S 2005-R70B  
w/r 8650 LRV 51



Glacier Blue **8450**  
NCS S 2030-B  
w/r 8450 LRV 42



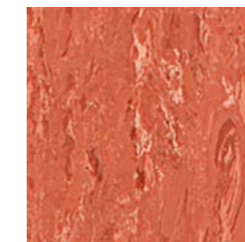
Thistle **8600**  
NCS S 4030-R70B  
w/r 8600 LRV 18



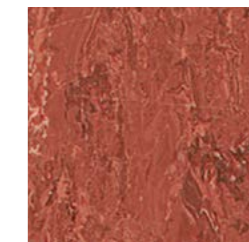
Sapphire **8550**  
NCS S 4030-R90B  
w/r 8550 LRV 21



Saffron **8490**  
NCS S 2050-Y20R  
w/r 3070 LRV 41



Brushed Ochre **8000**  
NCS S 3050-Y70R  
w/r 8000 LRV 23



Sequoia **8400**  
NCS S 3040-Y80R  
w/r 4120 LRV 16



Shadow **8150**  
NCS S 7502-B  
w/r 8270 LRV 12





## Technical Specification

### Product Format

Gauge	ISO 24346 (EN 428)	1.5mm, 2.0mm
Total Weight	ISO 23997 (EN 430)	1.5mm: 2360g/m <sup>2</sup> 2.0mm: 3200g/m <sup>2</sup>
Finish		PU

### Performance Requirements

General Performance	ISO 10581	Conforms
	ASTM F1913	Conforms
	ASTM F1700	Class I, Type A
Use Area	ISO 10874 (EN 685)	23, 32, 41 (1.5mm) 23, 34, 43 (2.0mm)
Slip Resistance	EN 13893	Class DS
	DIN 51130 /	R9
	DIN EN 16165 Ann. B	
	AS 4586	R9
Binder Content	ISO 10581	Type II
	EN 660-2	Group M
Abrasion Resistance	EN 13501-1	Class Bfl-S1
	ASTM E648	Class 1
	ASTM E662	<450
Reaction to Fire	CAN/ULC S102.2	FSV < 300; SDV < 500 (2.0mm)
	AS ISO 9239-1	>8.0 kW/m <sup>2</sup>
Static Electrical Propensity	EN 1815	≤2.0kV Classified as 'antistatic'
Residual Indentation	ASTM F970 (Modified) ISO 24343-1	≤0.005" (750psi) (2.0mm) ≤0.10mm
Castor Chair (continuous use)	ISO 4918 (EN 425)	Suitable
Flexibility	ASTM F137	Pass
Underfloor Heating		Suitable, max 27°C
Light Fastness	ISO 105-B02 (Method 3)	≥6
Resistance to Light	ASTM F1515	ΔE ≤ 8.0 - Meets
Resistance to Heat	ASTM F1514	ΔE ≤ 8.0 - Meets

### Sustainability

BRE Green Guide		A+ ENP 472
GreenTag	LCA Rate Gold Plus	GreenRate level A (2.0mm)
Generic EN 15804 EPD		Available
Recyclable		100%
Recycled Content		25%
REACH		Compliant
Indoor Air Comfort Gold		Eurofins certified product
FloorScore		Certified
Finnish M1 Classification		Certified
AqBB/ABG		Pass
Responsible Sourcing	BES 6001	Excellent

### Acoustic Performance

Impact Sound Reduction	ISO 10140-3	4dB (2.0mm)
------------------------	-------------	-------------

### Maintenance Performance

Resistance to Chemicals	ISO 26987 (EN 423)	Good resistance
	ASTM F925	Good resistance
Alco Hand Gels	Compatible for use with most commonly used alco-based hand gels	
Steam Cleaning	Suitable for steam cleaning on a periodic basis	

All Polyflor commercial sheet vinyl ranges provide a continuous, impervious and hygienic flooring solution which can be confidently cleaned in accordance with recommended maintenance procedures and approved maintenance products. The implementation of an effective cleaning regime is the most important defence against infection. Regular light maintenance is more cost-effective than periodic heavy maintenance and more beneficial to the floor covering.

### Hygiene

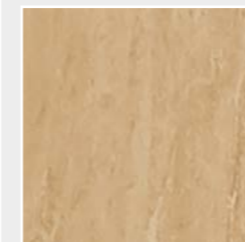
Bacterial Resistance	ISO 846 Part C	Does not favour growth
Ease of Radioactive Decontamination	ISO 8690	Excellent

## Sheet & Tile Sizes

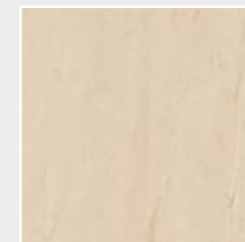
Format	Size	Shades	Coverage per Roll
Sheet	1.5mm 2m x 27.5m ■	4	55m <sup>2</sup>
	2.0mm 2m x 20m	23	40m <sup>2</sup>

Format	Size	Shades	Quantity per Box	Coverage per Box
Tile	2.0mm 300mm x 300mm ■	12	50	4.5m <sup>2</sup>
	2.0mm 608mm x 608mm +	12	14	5.17m <sup>2</sup>

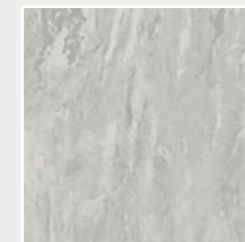
### UK COLLECTION



**Dolomite 3910** w/r 2500  
NCS S 3020-Y20R LRV 41



**Carnelian Beige 3890** w/r 5330  
NCS S 1510-Y30R LRV 61



**Pumice 3700** w/r 2650  
NCS S 2000-N LRV 54



**Opal 3920** w/r 2670  
NCS S 1020-Y10R LRV 60



**Ruby 3840** w/r 2560  
NCS S 3060-Y80R LRV 14



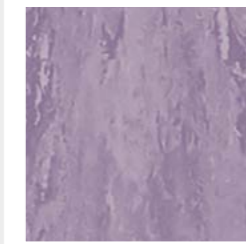
**Sablee Beige 3900** w/r 2510  
NCS S 4020-Y30R LRV 29



**Rose Quartz 3870** w/r 3870  
NCS S 2005-Y50R LRV 56



**Porcelain 3880** w/r 3880  
NCS S 1505-Y30R LRV 58



**Amethyst 3780** w/r 3780  
NCS S 3020-R50B LRV 36



**Dark Sapphire 3820** w/r 2530  
NCS S 5020-B30G LRV 18



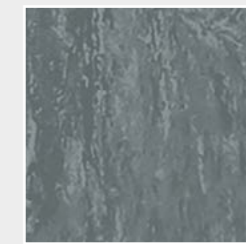
**Ironstone 3850** w/r 3850  
NCS S 4040-Y70R LRV 18



**Citrine 3930** w/r 2660  
NCS S 2030-Y20R LRV 46



**Fossil 3710** w/r 3710  
NCS S 3000-N LRV 41



**Flint 3720** w/r 3720  
NCS S 5502-B LRV 25



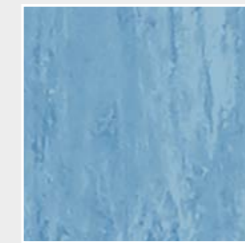
**Peridot Green 3790** w/r 3790  
NCS S 2010-B90G LRV 55



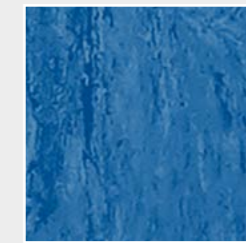
**Blue Zircon 3760** w/r 8440  
NCS S 4050-R80B LRV 11



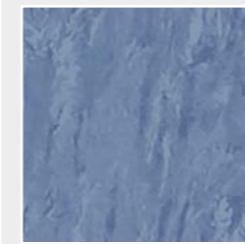
**Blue Nickel 3730** w/r 5350  
NCS S 3010-R90B LRV 39



**Crystal Blue 3740** w/r 3740  
NCS S 2030-R90B LRV 38



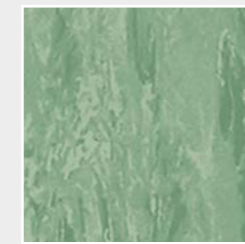
**Tanzanite Blue 3750** w/r 3750  
NCS S 4040-R90B LRV 19



**Azure 3770** w/r 3770  
NCS S 4020-R80B LRV 26



**Turquoise 3810** w/r 2610  
NCS S 4010-B70G LRV 31



**Connemara Green 3800** w/r 3800  
NCS S 3030-G20Y LRV 35



**Jade 3830** w/r 2520  
NCS S 6020-G LRV 14



# Standard XL



## Technical Specification

### Product Format

Gauge	ISO 24346 (EN 428)	1.5mm, 2.0mm
Total Weight	ISO 23997 (EN 430)	1.5mm: 2360g/m <sup>2</sup> 2.0mm: 3200g/m <sup>2</sup>

### Performance Requirements

General Performance	ISO 10581	Conforms
	ASTM F1913	Conforms
	ASTM F1700	Class I, Type A
Use Area	ISO 10874 (EN 685)	23, 32, 41 (1.5mm) 23, 34, 43 (2.0mm)
	EN 13893	Class DS
Slip Resistance	DIN 51130 /	R9
	DIN EN 16165 Ann. B	R9
	AS 4586	R9
	ASTM D2047	SCOF ≥0.6
Binder Content	ISO 10581	Type II
Abrasion Resistance	EN 660-2	Group M
	EN 13501-1	Class Bfl-S1
Reaction to Fire	ASTM E662	<450
	ASTM E648	Class 1
	CAN/ULC S102.2	FSV < 300; SDV < 500 (2.0mm)
Static Electrical Propensity	AS ISO 9239-1	>8.0 kW/m <sup>2</sup>
	EN 1815	≤2.0kV Classified as 'antistatic'
Residual Indentation	ASTM F970 (Modified)	≤0.005" (750 psi) (1.5mm, 2.0mm)
	ISO 24343-1	≤0.10mm
Castor Chair (continuous use)	ISO 4918 (EN 425)	Suitable
Flexibility	ASTM F137	Pass
Underfloor Heating		Suitable, max 27°C

### Performance Requirements (Continued)

Light Fastness	ISO 105-B02 (Method 3)	≥6
Resistance to Light	ASTM F1515	ΔE ≤ 8.0 - Meets
Resistance to Heat	ASTM F1514	ΔE ≤ 8.0 - Meets

### Sustainability

BRE Green Guide		A+ ENP 472
Generic EN 15804 EPD		Available
Recyclable		100%
Recycled Content		25%
REACH		Compliant
Indoor Air Comfort Gold		Eurofins certified product
FloorScore		Certified
Finnish M1 Classification		Certified
AqBB/ABG		Pass
Responsible Sourcing	BES 6001	Excellent

### Acoustic Performance

Impact Sound Reduction	ISO 10140-3	4dB (2.0mm)
------------------------	-------------	-------------

### Maintenance Performance

Resistance to Chemicals	ISO 26987 (EN 423)	Good resistance
	ASTM F925	Good resistance
Alco Hand Gels	Compatible for use with most commonly used alco-based hand gels	
Steam Cleaning	Suitable for steam cleaning on a periodic basis	

All Polyflor commercial sheet vinyl ranges provide a continuous, impervious and hygienic flooring solution which can be confidently cleaned in accordance with recommended maintenance procedures and approved maintenance products. The implementation of an effective cleaning regime is the most important defence against infection. Regular light maintenance is more cost-effective than periodic heavy maintenance and more beneficial to the floor covering.

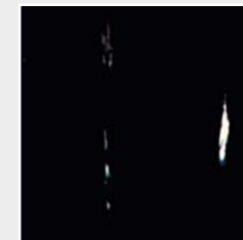
## Sheet & Tile Sizes

Format	Size	Shades	Coverage per Roll
Sheet	1.5mm 2m x 27.5m ■	3	55m <sup>2</sup>
	2.0mm 2m x 20m	12	40m <sup>2</sup>

Format	Size	Shades	Quantity per Box	Coverage per Box
Tile	2.0mm 300mm x 300mm ■	4	50	4.5m <sup>2</sup>
	2.0mm 608mm x 608mm ◆	4	14	5.17m <sup>2</sup>

## Standard XL

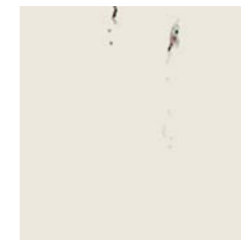
### UK COLLECTION



**Black Panther 8640** w/r 8640  
NCS S 8502-R LRV 6



**Slate Grey 9200** w/r 9200  
NCS S 4000-N LRV 32  
■ ■ ◆



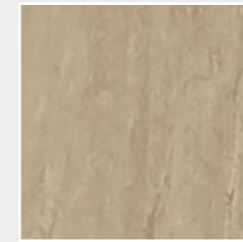
**Dove White 8740** w/r 9520  
NCS S 0804-Y70R LRV 75



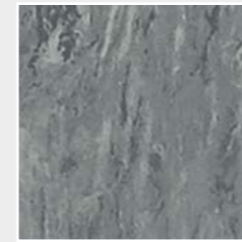
**Nougat 9010** w/r 9010  
NCS S 3005-Y50R LRV 40



**Polar Grey 9340** w/r 9340  
NCS S 2002-Y50R LRV 54  
■ ■ ◆



**Mushroom 9110** w/r 9110  
NCS S 3010-Y30R LRV 40  
■ ◆



**Graphite 9120** w/r 9120  
NCS S 4502-G LRV 28  
■ ■ ◆



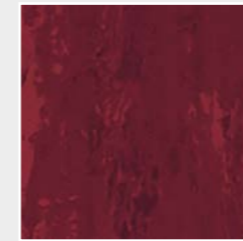
**Desert Sand 9180** w/r 9180  
NCS S 3020-Y10R LRV 37



**Sea Green 9190** w/r 9190  
NCS S 3005-G20Y LRV 38



**Venetian Blue 9040** w/r 9040  
NCS S 4030-B10G LRV 19



**Black Cherry 8580** w/r 8580  
NCS S 5030-R LRV 9



**Atlantic Blue 9170** w/r 9170  
NCS S 4020-R90B LRV 23



# All you need to know

## Our history

Founded in 1915, James Halstead plc, the parent company of Polyflor Ltd, was originally a textile company based in Manchester, UK, until the 1950's when it pioneered the development of homogeneous vinyl floorings.



## Responsible sourcing

Polyflor is proud to be the first flooring manufacturer to be awarded BES 6001 certification for the Responsible Sourcing of Construction Product, achieving an Excellent rating. This is a recognised standard certified by BRE Global which proves that a manufacturer is using materials that have been responsibly sourced and acts responsibly.



## Help is here

Polyflor has dedicated and experienced personnel within its sales, marketing, technical and design departments, to provide comprehensive support to our customers. We are ready to assist with queries on topics such as product selection, specification, installation, performance and ongoing maintenance.

# Let us help you



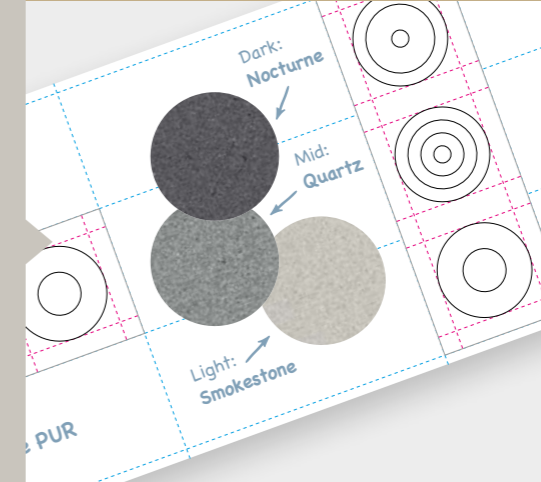
## Product innovation

In collaboration with industry partners, Polyflor is working on developments in new products and technologies. Recent launches include a non-directional homogeneous sheet collection that keeps waste to a minimum and loose lay adhesive-free safety sheet and high design tile and plank flooring for quick turnaround projects.



## Design service

Our designers can provide visuals and advise colours and product choices when you're looking to create a memorable floor design. We offer the precision and the flexibility of waterjet cutting to produce any design you require.



## BIM objects

A selection of Polyflor's market leading product ranges are now available as Building Information Modelling (BIM) objects. These objects can be downloaded free of charge from the NBS National BIM Library or [www.polyflor.com/bim](http://www.polyflor.com/bim) and [www.bimobject.com](http://www.bimobject.com)

## Commitment to our supply chain

With ISO 9001 Quality Management and ISO 14001 accreditation, the availability of consistent, good quality products is ensured. We test our products to a wide range of international standards, including slip resistance and VOC emissions, to back-up their performance.



## Flooring when you need it

Thanks to Polyflor's extensive warehousing facilities and commitment to holding large quantities of stock, we can react quickly to orders and offer faster lead times for our customers. Polyflor products are readily available worldwide through our wide network of supporting agents and wholesale partners.



## Training at Polyflor

To encourage best practice throughout the flooring sector, Polyflor offers both floor laying and floor cleaning courses in a purpose-built facility. For more info contact [trainingacademy@polyflor.com](mailto:trainingacademy@polyflor.com)



## Recycling vinyl

Polyflor is a co-founding and funding member of Recofloor, the UK flooring industry's leading vinyl take back scheme for waste vinyl off-cuts and smooth uplifted flooring. For more information about the Recofloor recycling scheme visit [www.recofloor.org](http://www.recofloor.org)



## Low maintenance

Polyflor's PUR polyurethane reinforcement is cross linked and UV cured for enhanced protection, optimum appearance retention and superior cleaning benefits such as an easier more environmentally friendly maintenance regime. For further in-depth and tailored information on floor maintenance, visit [www.polyflor.com](http://www.polyflor.com)



## Free samples

To request free individual product samples of any of Polyflor's flooring collections, visit [www.polyflor.com](http://www.polyflor.com) and follow the link to Samples. Alternatively, you can call the dedicated Polyflor Sample Hotline on +44 (0)161 767 2551









POLYFLOR™ UK

Polyflor Ltd. PO Box 3, Radcliffe New Road,  
Whitefield, Manchester, M45 7NR

Tel: +44 (0) 161 767 1111  
E-mail: [info@polyflor.com](mailto:info@polyflor.com)

[www.polyflor.com](http://www.polyflor.com)

LIT369 12/23

*James Halstead*<sup>™</sup>  
FLOORING